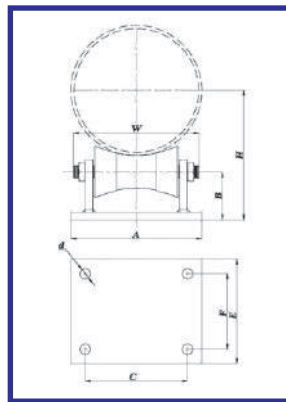


Roller Stand



SELECTION TABLE (Table No: RS190215-01)

Model	Steel Pipe Nominal	Dimensions (mm)								Load (kg)
		H*	W	A	B	C	E	F	d	
SRS4-6	4"	120	160	150	50	115	135	100	16	520
	5"	136								
	6"	152								
SRS8-10	8"	213	235	215	80	160	165	110	20	1250
	10"	242								
SRS12-14	12"	283	300	275	92	220	200	145	20	1600
	14"	302								
SRS16-20	16"	340	340	310	100	245	215	150	24	3600
	18"	368								
	20"	396								
SRS22-24	24"	455	390	340	110	265	240	165	24	5300
SRS26-30	30"	545	470	430	118	345	270	185	28	7400
SRS32-34	34"	605	490	465	123	380	285	200	28	7400
SRS36-42	36"	635	540	500	125	415	300	215	28	10300
	42"	720								
SRS48-54	48"	800	580	550	135	465	330	245	28	13100
	54"	880								
SRS60-66	60"	970	620	600	155	500	375	275	35	19300
	66"	1046								

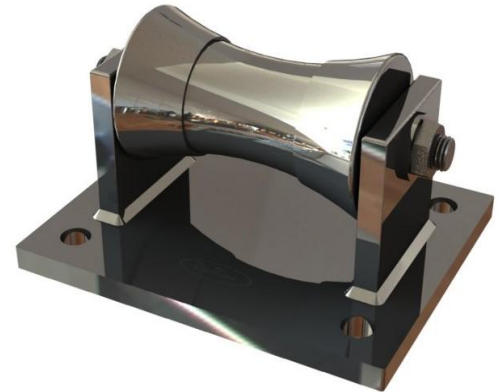
* Dimension 'H' may vary marginally depending upon the effective OD of supported pipe.
 · For insulated pipe, please select the Roller Stand Model based on effective pipe OD.

1. Compliance

- 1.1 Conforming to MSS-SP69, MSS-SP58(Type 44), BS 3974:part1, Federal Specifications WW-H-171E & A-A-1192A Type 45
- 1.2 EG to ASTM B633SC3, BS 1706 FE/ZN12

2. Application

- 2.1 The Roller Stands are used for long horizontal pipe lines which are subjected for temperature fluctuations. These are designed to compensate longitudinal movement of pipe line due to expansion or contraction of both insulated and non-insulated piping. These Roller Stands are typically used in large district cooling / heating plant distribution piping, process pipe lines boilers piping etc.



Roller Stand

3. Product Features

- 3.1 OnTides Roller Stands are made from solid steel iron rollers for rigid pipe supporting.
- 3.2 The Roller Stands are available in wide range of material specification
 - 3.2.1 Fully electrogalvanized cast iron Roller Stands are standard.
 - 3.2.2 Stainless steel Roller Stands (suffix "SS")
 - 3.2.3 Nylon Roller Stands (suffix "NL")
 - 3.2.4 Hot dip galvanized Roller Stands (suffix "HDG")
 - 3.2.5 Epoxy powder coated Roller Stands (suffix "EP")
- 3.3 The roller pin and rods are made from high tensile steel fully electrogalvanized as standard / hot dip galvanized as optional.
- 3.4 Optional pipe guide assembly shall be provided to protect the piping in case of water hammer and external vibrations.

4. Note:

Insulation protection shield / saddle shall be used under insulation to support insulated piping.

