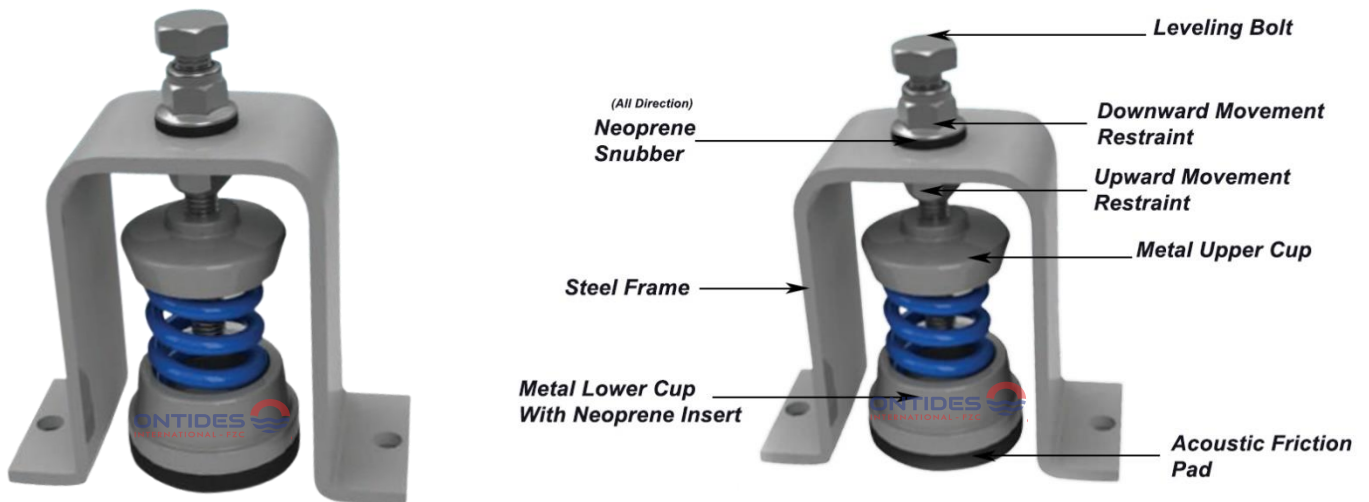


Restrained Spring Mount – Model: BRSM

25 mm Standard Deflection



1. Compliance:

- 1.1. Designed to BS 1726 -1 : 1987
- 1.2. Tolerance to BS 1726-1 : 2002
- 1.3. SAE and ASHRAE Guidelines for Vibration Isolation.

2. Application:

Isolation of seismic vibrations for Pumps, Boilers, Cooling Towers, Compressors etc.

3. Product Features:

- 3.1. Spring elements are designed to operate without spring buckling with horizontal stiffness equal to vertical stiffness.
- 3.2. These springs are provided with 50% overload capacity at 1.5 times of rated deflection.
- 3.3. Steel frame with restrained Neoprene snubbers and dual vertical restraint plates are provided to limit movement of the connected machinery up to maximum 3 mm.
- 3.4. Replaceable springs and built in levelling arrangements.
- 3.5. Multi Directional Restraint with vertical limit stops.
- 3.6. The springs are powder coated with appropriate colour coding to facilitate identification.
- 3.7. Provided with Neoprene base pad which can isolate high frequency vibrations of audible range.
- 3.8. The restraining system is capable to withstand 1.0g acceleration force.
- 3.9. Springs are powder coated to 100 microns paint thickness (exceeds 1,000 hours of salt spray test) conforming to ASTM B-117.

Options:

- 1) Frame Hot Dip Galvanised (Prefix "HDG").
- 2) Spring Neoprene Coated (Prefix "N").
- 3) Spring Plastic Coated (Prefix "P").

4. Selection/Ordering:

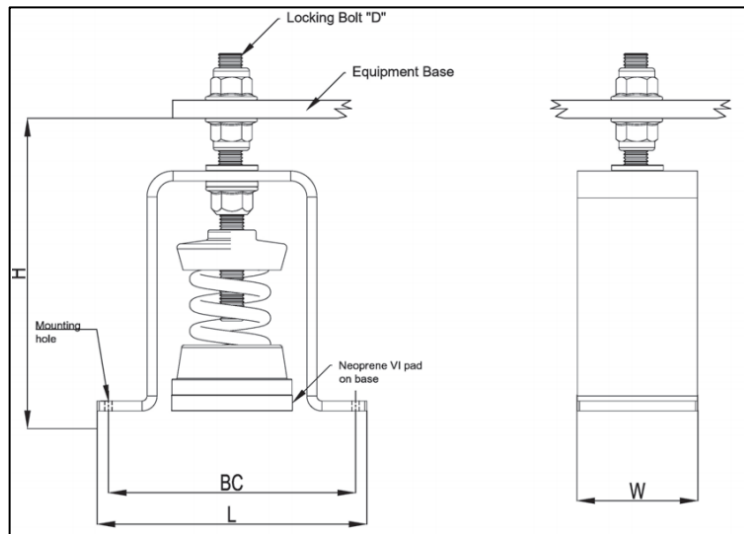
Point load (calculated to include variables such as weight of water in pipe lines etc. if applicable).

5. Installation Guidelines:

Included in the packing.

SPECIFICATIONS

Model No.	Rated Load (kg)	Spring Colour	Dimensions (mm)					
			L	W	H	BC	D	d
BRSM25-A50	50	Black	120	55	140	100	12	3/8"
BRSM25-A100	100	Blue						
BRSM25-A150	150	Grey						
BRSM25-A200	200	Orange						
BRSM25-A250	250	Brown						
BRSM25-A300	300	Purple						
BRSM25-B200	200	Green	160	72	180	140	14	1/2"
BRSM25-B250	250	Brown						
BRSM25-B300	300	Grey						
BRSM25-B400	400	Purple						
BRSM25-B500	500	Black						
BRSM25-B600	600	Yellow						
BRSM25-B700	700	Blue	180	90	200	160	14	5/8"
BRSM25-C400	400	Brown						
BRSM25-C500	500	Grey						
BRSM25-C600	600	Orange						
BRSM25-C700	700	Green						
BRSM25-C800	800	Brown*						
BRSM25-C900	900	Grey*						
BRSM25-C1000	1000	Orange *						
BRSM25-C1100	1100	Green *						
BRSM25-C1200	1200	Orange **						
BRSM25-C1300	1300	Green **						



* With WHITE Core Spring
** With BLUE Core Spring

Note:

- Due to policy of continuous improvement, the specifications are subject to change without prior notice.
- Measurements are subject to 5% tolerance.
- To achieve good sound suppression, do not overload fitting.