

Open Spring Mounts – Elastomeric Based 25 & 50 mm Deflection



1. Compliance:

- 1.1. Designed to BS 1726 -1 : 1987
- 1.2. Tolerance to BS 1726-1 : 2002
- 1.3. SAE and ASHRAE Guidelines for Vibration Isolation.

2. Application:

These are widely used for making Inertia Base Frames along with snubbers.

3. Product Features:

- 3.1. Spring elements are designed to operate without spring buckling with horizontal stiffness equal to vertical stiffness.
- 3.2. These springs are provided with 50% overload capacity at 1.5 times of rated deflection.
- 3.3. Bottom plates are made of thick ribbed Elastomeric Pad for isolating noise and vibration.
- 3.4. Standard product range up to 2" deflection and custom isolators with higher deflections are available.
- 3.5. Upper load plate and levelling assembly are provided for accurate levelling.
- 3.6. The springs are powder coated with appropriate colour coding to facilitate identification.
- 3.7. Springs are powder coated to 100 microns paint thickness (exceeds 1,000 hours of salt spray test) conforming to ASTM B-117
- 3.8. As Elastomeric Rubber is inherently resistant against oil, grease, UV etc, this is suitable corrosive outdoor applications.

Options:

- 1. Frame Hot Dip Galvanised (Prefix "HDG").
- 2. Spring Elastomeric coated (Prefix "N").
- 3. Spring Plastic coated (Prefix "P").
- 4. Stainless Steel Bolt (Prefix "SS").

4. Selection/Ordering:

Point Load (calculated to include variables such as weight of water in pipe lines etc. if applicable).

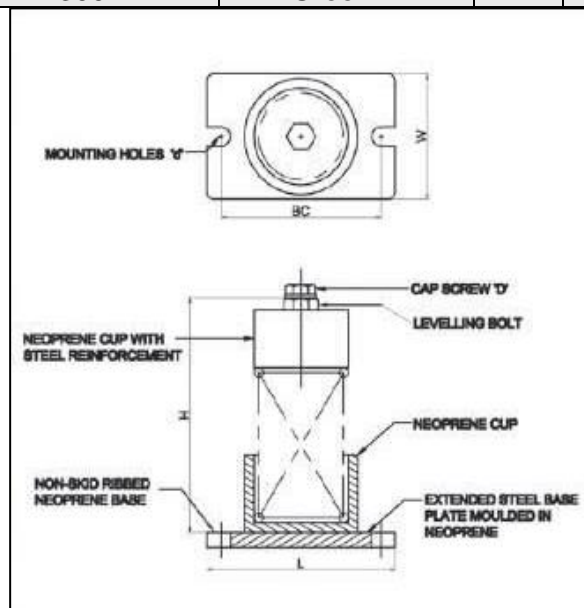
5. Installation Guidelines:

Included in packing.

Open Spring Mounts - Elastomeric Based - 25 mm Deflection

SPECIFICATION

Model No.	Rated Load (Kg)	Spring Colour	Dimensions (mm)					
			L	W	H	BC	D	d
BOSMRB25-A25	25	Green	96	57	105	78	M12	12
BOSMRB25-A30	30	Brown						
BOSMRB25-A50	50	Black						
BOSMRB25-A60	60	Yellow						
BOSMRB25-A100	100	Blue						
BOSMRB25-A150	150	Grey						
BOSMRB25-A200	200	Orange						
BOSMRB25-A250	250	Red						
BOSMRB25-A300	300	Purple	138	77	142	107	M12	12
BOSMRB25-B200	200	Green						
BOSMRB25-B250	250	Brown						
BOSMRB25-B300	300	Grey						
BOSMRB25-B400	400	Purple						
BOSMRB25-B500	500	Black						
BOSMRB25-B600	600	Yellow						
BOSMRB25-B700	700	Yellow ***						
BOSMRB25-C400	400	Brown	155	87	142	121	M12	12
BOSMRB25-C500	500	Grey						
BOSMRB25-C600	600	Orange						
BOSMRB25-C700	700	Green						
BOSMRB25-C800	800	Brown *						
BOSMRB25-C900	900	Grey *						
BOSMRB25-C1000	1000	Orange *						
BOSMRB25-C1100	1100	Green *						
BOSMRB25-C1200	1200	Orange **						
BOSMRB25-C1300	1300	Green **						

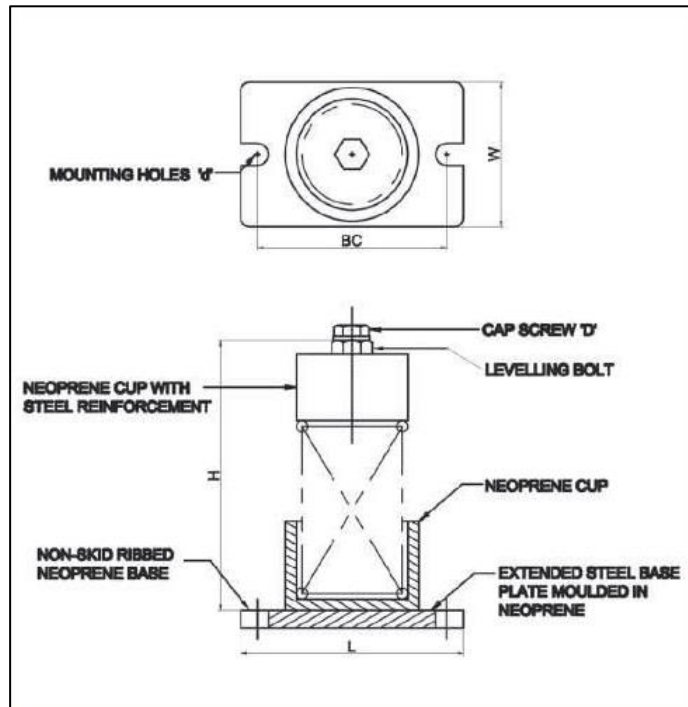


With RED Core Spring
 * With WHITE Core Spring
 ** With BLUE Core Spring
 *** With BLACK Core Spring

Open Spring Mounts - Elastomeric Based - 50 mm Deflection

SPECIFICATION

Model No.	Rated Load (kg)	Spring Colour	Dimensions (mm)					
			L	W	H	BC	D	d
BOSMRB50-A10	10	Brown	120	108	150	102	12	M10
BOSMRB50-A15	15	Orange						
BOSMRB50-A30	30	Green						
BOSMRB50-A40	40	Red						
BOSMRB50-A60	60	White						
BOSMRB50-A100	100	Blue						
BOSMRB50-A150	150	Black						
BOSMRB50-A200	200	Yellow						
BOSMRB50-A250	250	Purple						
BOSMRB50-A300	300	Grey						
BOSMRB50-C200	200	Red	170	140	200	140	20	M16
BOSMRB50-C250	250	Orange						
BOSMRB50-C300	300	Brown						
BOSMRB50-C400	400	Green						
BOSMRB50-C500	500	Yellow						
BOSMRB50-C600	600	Yellow*						
BOSMRB50-C700	700	Yellow**						
BOSMRB50-C800	800	Yellow***						



* With WHITE Core Spring
 ** With BLUE Core Spring
 *** With BLACK Core Spring

Note:

- Due to policy of continuous improvement, the specifications are subject to change without prior notice.
- Measurements are subject to 5% tolerance.
- To achieve good sound suppression, do not overload fitting.