

Open Spring Mounts – Metal Based



1. Compliance:

- 1.1. Designed to BS 1726 -1 : 1987
- 1.2. Tolerance to BS 1726-1 : 2002
- 1.3. SAE and Ashrae Guidelines for Vibration Isolation.

2. Application:

To isolate vibration from rotating and reciprocating machines. For example : Air Handling Units, Axial and Centrifugal Fans, Duct work, Pipe Work, Condensing Units, Pump Units, Chillers, Genset etc.

3. Product Features:

- 3.1. The Springs are designed to have a stiffness ratio more than unity which ensures buckle free operation throughout load range.
- 3.2. Springs and Casing are powder coated with 1000 hours of Salt Spray Test conforming to ASTM B-117.
- 3.3. Upper Load Plate and Levelling Assembly are provided for accurate Levelling.
- 3.4. In heavier capacities, Springs are welded to Load Plate with Neoprene Pad.
- 3.5. Standard Product Range offers upto 2" deflection with optional Custom-made Isolators of higher deflection.
- 3.6. Thick ribbed Neoprene Pads are provided below Load Plate for noise isolation and non-skid. 10-18 mm thick neoprene sound pads are provided.
- 3.7. Colour Coded Coated Springs for easy identification of Load.

4. Selection/Ordering:

Static Load.

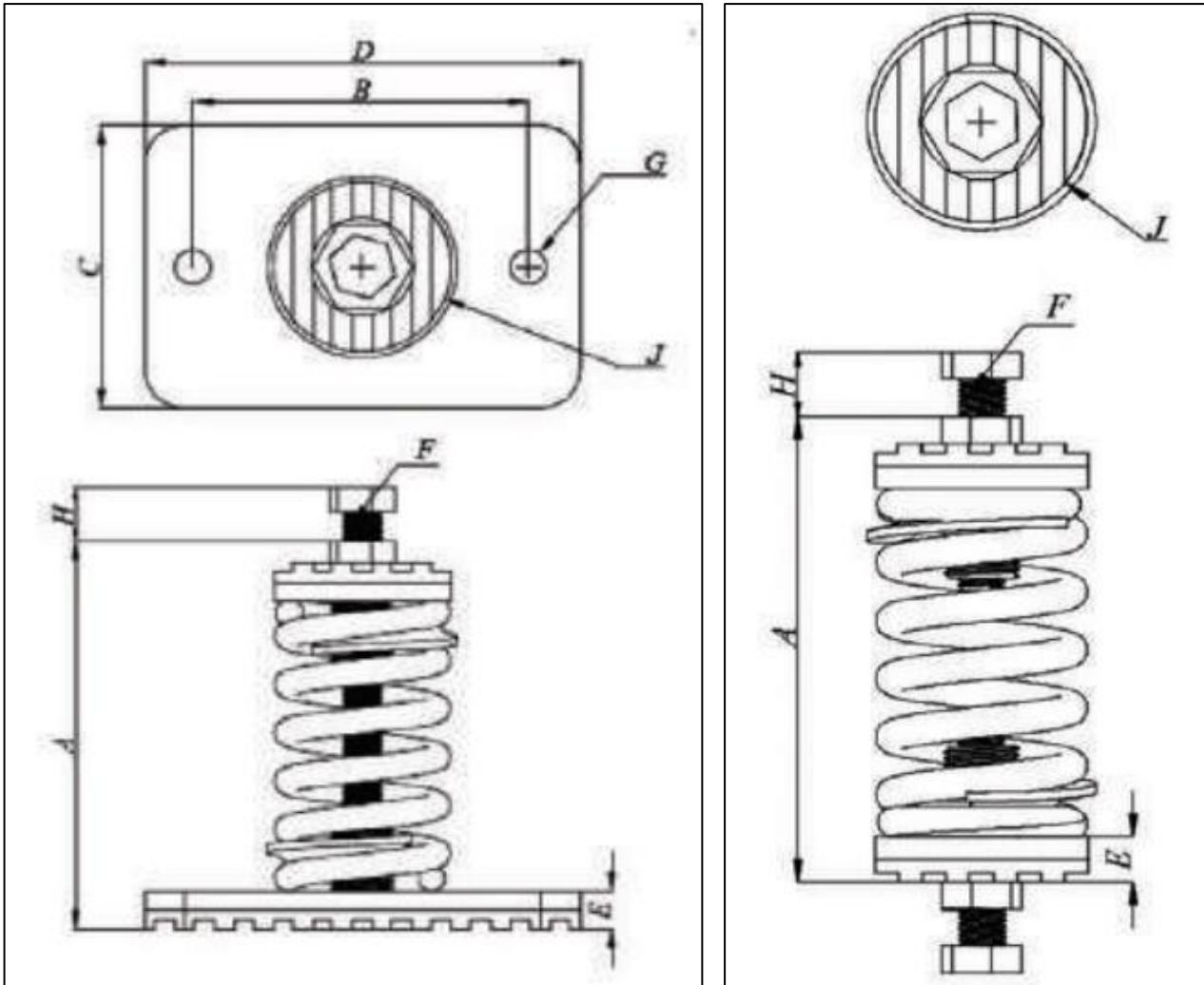
Isolation Efficiency at Typical Machine Speeds

M/C Speed (rpm)	Efficiency %		
	15mm Defl.	25mm Defl.	50mm Defl.
300	Do not use	34.0	75.2
500	68.7	83.3	92.3
750	88.1	93.2	96.7
1000	93.7	96.3	98.2
1200	95.5	97.4	98.7
1500	97.3	98.4	99.2
1750	98.0	99.8	99.4
2000	98.5	99.1	99.5

The above figures are theoretical values only based on the vertical natural frequency of the spring system assuming in infinitely stiff structural supports. The effects of high frequency spring coil resonances on low frequency performance are also ignored.

SPECIFICATIONS

Part No.	Colour Code	Rated Load (kg)	Deflection at Rated Load(mm)	A	B	C	D	E	F	G	H	J
BOSMMB25-A25	Green	25	25	105	85	75	110	10	M10	9	20	45
BOSMMB25-A30	Brown	30	25									
BOSMMB25-A50	Black	50	25									
BOSMMB25-A60	Yellow	60	25									
BOSMMB25-A75	White	75	25									
BOSMMB25-A100	Blue	100	25									
BOSMMB25-A150	Grey	150	25									
BOSMMB25-A200	Orange	200	25									
BOSMMB25-A250	Red	250	25									
BOSMMB25-A300	Purple	300	25									
BOSMMB25-A250	Red	250	25									
BOSMMB25-A300	Purple	300	25									
BOSMMB25-B200	Green	200	25	140	110	100	140	10	M14	13	27	62
BOSMMB25-B250	Brown	250	25									
BOSMMB25-B300	Grey	300	25									
BOSMMB25-B400	Purple	400	25									
BOSMMB25-B500	Black	500	25									
BOSMMB25-B600	Yellow	600	25									
BOSMMB25-C400	Brown	400	25	140	165	130	200	12	M16	17	30	72
BOSMMB25-C500	Grey	500	25									
BOSMMB25-C600	Orange	600	25									
BOSMMB25-C700	Green	700	25									



Note:

- Due to policy of continual improvement, the specifications are subject to change without prior notice.
- Measurements are subject to 5% tolerance.
- To achieve good sound suppression, do not overload fitting.