

Combination Spring Hangers – Light Duty



COMBINATION SPRING HANGER - LIGHT DUTY
13mm & 25mm DEFLECTION

1. Compliance:

- 1.1. Designed to BS 1726 -1 : 1987
- 1.2. Tolerance to BS 1726-1 : 2002
- 1.3. SAE and Ashrae Guidelines for Vibration Isolation.

2. Application:

Generally for light duty applications like small fans, humidifiers, variable air volume boxes, small fan coil units, small size piping and air ducting in mechanical rooms.

3. Product Features:

- 3.1. Double protection against transmission of noise to structures is assured as the neoprene component provides an effective acoustic barrier and the moulded neoprene cup below the spring prevents metal to spring contact, thus effectively isolating the suspended equipment from the structure.
- 3.2. The Springs are designed to have a stiffness ratio more than unity which ensures buckle free operation throughout load range.
- 3.3. Suspension rod misalignment (30-degree arc) is compensated in hanger design.
- 3.4. Locking rubber bush centralizes the spring and prevents dislocation.
- 3.5. Springs are powder coated with appropriate colour coding to facilitate identification.
- 3.6. Frame is made of G.I. steel and powder coated to 100 microns paint thickness (exceeds 1000 hours of salt spray test) and conforming to ASTM B-117.

Options:

- 1) Frame Hot Dip Galvanised (Prefix Part Number with "HDG").
- 2) Spring Neoprene Coated (Prefix Part Number with "N").
- 3) Spring Plastic Coated (Prefix Part Number with "P").

- 3.7. The Springs are designed to have additional 50% of rated load at 1.5 of rated deflection.

4. Selection/Ordering:

Point load (Calculated to include all variables such as weight of water in pipe lines etc. if applicable).

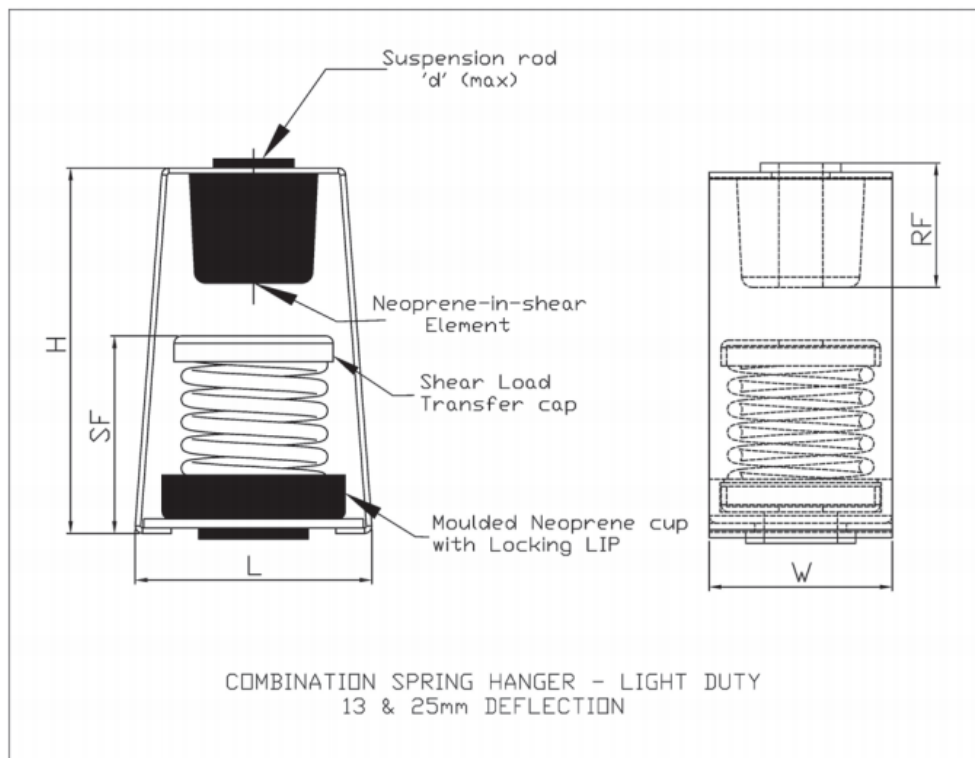
5. Installation Guidelines:

Included in packaging.

SPECIFICATION

Isolator Model	Rated Deflection	Rated Load (kg)	Spring Colour	Dimensions (mm)					
				L	W	SF*	RF	H	d (max)
BCSHL-M6	13 mm	6	Orange	65	50	54	30	120	M10
BCSHL-M9		9	Grey						
BCSHL-M15		15	Blue						
BCSHL-M21		21	Green						
BCSHL-M28		28	White						
BCSHL-P6	25 mm	6	Green	65	50	70	30	140	M10
BCSHL-P9		9	Red						
BCSHL-P15		15	Black						
BCSHL-P21		21	Yellow						
BCSHL-P28		28	Blue						
BCSHL-P35		35	Grey						
BCSHL-P50		50	Orange						

* Represents average free height in each grouping of models. Height of some models in group may vary slightly from this figure.



Note:

- Due to policy of continuous improvement, the specifications are subject to change without prior notice.
- Measurements are subject to 5% tolerance.
- To achieve good sound suppression, do not overload fitting.

Combination Spring Hanger

25 mm & 50 mm Standard Deflection



Combination Spring Hanger
25mm & 50mm Standard Deflection
A, B & C Bodies

1. Compliance:

- 1.1. Designed to BS 1726 -1 : 1987
- 1.2. Tolerance to BS 1726-1 : 2002
- 1.3. SAE and Ashrae Guidelines for Vibration Isolation.

2. Application:

- 2.1. Generally used for suspension of heavy rotating equipment, for example Air Handling Units, Fan Coil Units, Ventilation Fans, Large Variable Air Volume Boxes, Pipes and air ducts in Mechanical Rooms.
- 2.2. These are highly effective when vibrations of high frequency and large amplitude are present.

3. Product Features:

- 3.1. Double protection against transmission of noise to structures is assured as the neoprene component provides an effective acoustic barrier and the moulded neoprene cup below the spring prevents metal to spring contact, thus effectively isolating the suspended equipment from the structure.
- 3.2. The Springs are designed to have a stiffness ratio more than unity which ensures buckle free operation throughout load range.
- 3.3. Suspension rod misalignment (30-degree arc) is compensated in hanger design.
- 3.4. Locking rubber bush centralizes the spring and prevents dislocation.
- 3.5. Springs are powder coated with appropriate colour coding to facilitate identification.
- 3.6. Frame is made of G.I. steel and powder coated to 100 microns paint thickness (exceeds 1000 hours of salt spray test) and conforming to ASTM B-117.

Options:

- 1. Frame Hot Dip Galvanised (Prefix Part Number with "HDG")
- 2. Spring Neoprene Coated (Prefix Part Number with "N")
- 3. Spring Plastic Coated (Prefix Part Number with "P")

- 3.7. The Springs are designed to have additional 50% of rated load at 1.5 of rated deflection.

4. Selection/Ordering:

Point load (Calculated to include all variables such as weight of water in pipe lines etc if applicable).

5. Installation Guidelines:

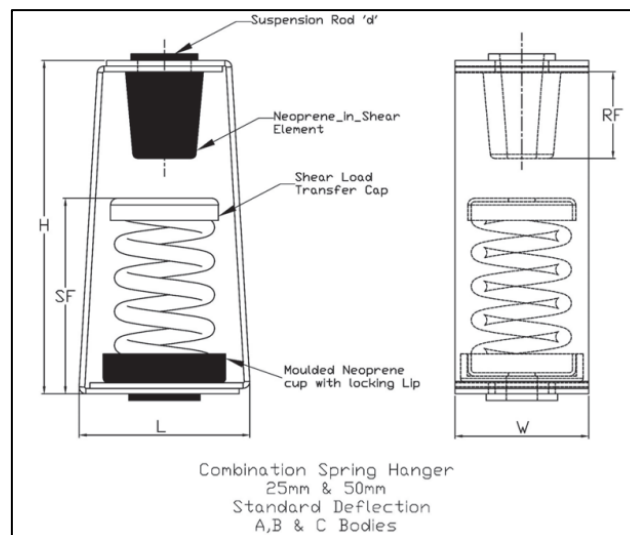
Included in packaging.

Combination Spring Hanger - 25mm Deflection

SPECIFICATION

Isolator Model	Rated Load (kg)	Spring Colours	Dimensions (mm)					
			L	W	SF*	RF	H	d
BCSH-A25	25	Green	75	60	78	39	170	M12
BCSH-A30	30	Brown						
BCSH-A50	50	Black						
BCSH-A60	60	Yellow						
BCSH-A75	75	White						
BCSH-A100	100	Blue						
BCSH-A150	150	Grey						
BCSH-A200	200	Orange						
BCSH-A250	250	Red						
BCSH-A300	300	Purple						
BCSH-B200	200	Green	90	80	100	46	200	M16
BCSH-B250	250	Brown						
BCSH-B300	300	Grey						
BCSH-B400	400	Purple						
BCSH-C400	400	Brown	90	80	105	73	240	M20
BCSH-C500	500	Grey						
BCSH-C600	600	Orange						
BCSH-C700	700	Green						
BCSH-2C800	800	Brown	120	120	105	73	240	M30
BCSH-2C1000	1000	Grey						
BCSH-2C1200	1200	Orange						
BCSH-2C1400	1400	Green						

* Represents average free height in each grouping of models. Height of some models in group may vary slightly from this figure.



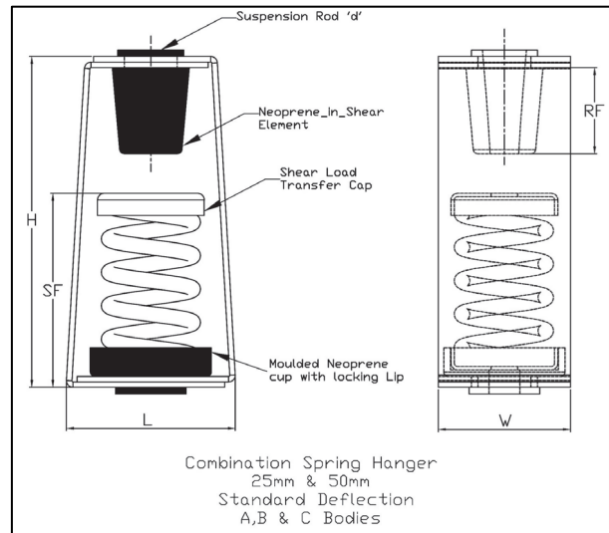
Note:

- Due to policy of continuous improvement, the specifications are subject to change without prior notice.
- Measurements are subject to 5% tolerance.
- To achieve good sound suppression, do not overload fitting.

Combination Spring Hanger - 50mm Deflection

SPECIFICATION

Isolator Model	Rated Load (kg)	Spring Colours	Dimensions (mm)				
			L	W	H	E (approx.)	d
BCSH50-A10	10	Brown	100	90	215	115	M16
BCSH50-A15	15	Orange					
BCSH50-A30	30	Green					
BCSH50-A40	40	Red					
BCSH50-A60	60	White					
BCSH50-A100	100	Blue					
BCSH50-A150	150	Black					
BCSH50-A200	200	Yellow					
BCSH50-A250	250	Purple					
BCSH50-A300	300	Grey					
BCSH50-C200	200	Red	107	100	250	130	M24
BCSH50-C250	250	Orange					
BCSH50-C300	300	Brown					
BCSH50-C400	400	Green					
BCSH50-C500	500	Yellow					
BCSH50-2C800	800	Green	240	100	250	130	M30
BCSH50-2C1000	1000	Yellow					
BCSH50-2C1200	1200	Yellow*					
BCSH50-2C1400	1400	Yellow**					
BCSH50-2C1600	1600	Yellow***					



- * With WHITE Core Spring
- ** With BLUE Core Spring
- *** With BLACK Core Spring

Note:

- Due to policy of continuous improvement, the specifications are subject to change without prior notice.
- Measurements are subject to 5% tolerance.
- To achieve good sound suppression, do not overload fitting.