

Cased Spring Mount

25 mm & 50 mm Standard Deflection



1. Compliance:

- 1.1. Designed to BS 1726 -1: 1987
- 1.2. Tolerance to BS 1726-1: 2002
- 1.3. SAE and ASHRAE Guidelines for Vibration Isolation.

2. Application:

Cased Spring Mounts are used for isolating floor mounted sources of noise and vibration near critically quiet areas. These mounts are combination of Neoprene and Spring. Hence it can isolate audible / inaudible noise and vibration produced from floor mounted Mechanical Equipments such as Reciprocating Compressors, Close Coupled and Base Mounted Pumps, Packaged Air Handling Units, Condensing Units, Roof Top Air Handling Units, Air Cooled / Water Cooled Chillers, Centrifugal / Axial Fans, Internal Combustion Engines, Generators, Drop Hammers, Punch Presses static deflection requirement of upto 50 mm.

3. Product Features:

- 3.1. Spring elements are designed to operate without Spring Buckling and shall have minimum of 50% overload capacity. Horizontal Stiffness is designed to have 85% to 100% of vertical stiffness with working deflection of maximum 60% at Rated load.
- 3.2. Spring mount has external levelling arrangements to ensure equipment is in level condition after installation.
- 3.3. Deflection can be provided for 25 mm and 50 mm at Rated Load.
- 3.4. Inner walls of lower casing have resilient rubber Snubbers which
 - 3.4.1. Provides a smooth guide for the top casing.
 - 3.4.2. Prevents metal to metal contact.
 - 3.4.3. Limits lateral movement during startups, shutdown and due to horizontal wind load.
- 3.5. Thick Ribbed Neoprene Pads are provided below the springs which provide noise barrier for high frequencies which may otherwise be transmitted to building structures. 10 mm thick Neoprene Sound Pads are provided.
- 3.6. Springs are powder coated with individual colours to facilitate identification.
- 3.7. Springs and Casings are powder coated upto 100 Microns with 1,000 Hours of Salt Spray Rating conforming to ASTM B-117.

Option:

- 3.7.1. Frame Hot Dip Galvanised (Prefix Part Number with "HDG")
- 3.7.2 Spring Neoprene Coated (Prefix Part Number with "N")
- 3.7.3 Spring Plastic Coated (Prefix Part Number with "P").

4. Selection/Ordering:

While calculating operating equipment weight, variables such as weight of water, weight of pipe fittings, valves etc should be taken into consideration to arrive at the actual loading on the spring.

5. Installation Guidelines:

Detailed installation guidelines are included in the spring mount package.

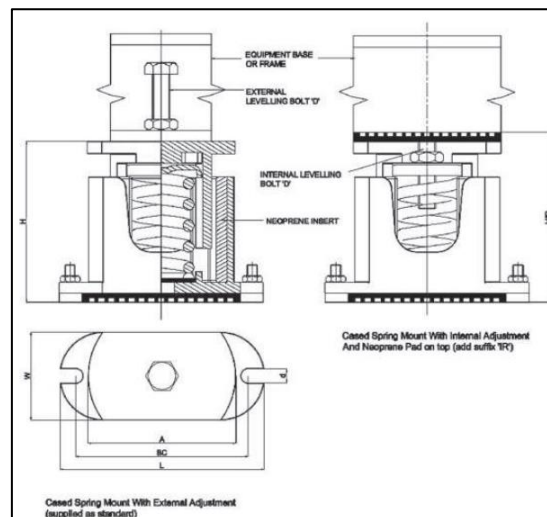
Cased Spring Mount – 25 mm Standard Deflection SPECIFICATION

Isolator Model	Rated Load (kg)	Spring Colours	Dimensions (mm)							
			L	W	H*	HIR*	A	BC	D	d
BCSM25-A25	25	Green	147	55	114	128	106	116	M10X75	M8
BCSM25-A30	30	Brown								
BCSM25-A50	50	Black								
BCSM25-A60	60	Yellow								
BCSM25-A75	75	White								
BCSM25-A100	100	Blue								
BCSM25-A150	150	Grey								
BCSM25-A200	200	Orange								
BCSM25-A250	250	Red								
BCSM25-A300	300	Purple								
BCSM25-A400	400	Purple***								
BCSM25-B200	200	Green	213	74	143	146	160	178	M12X75	M10
BCSM25-B250	250	Brown								
BCSM25-B300	300	Grey								
BCSM25-B400	400	Purple								
BCSM25-B500	500	Black								
BCSM25-B600	600	Yellow								
BCSM25-B700	700	Yellow***								
BCSM25-C400	400	Brown	225	86	143	146	174.5	188.3	M16X125	M14
BCSM25-C500	500	Grey								
BCSM25-C600	600	Orange								
BCSM25-C700	700	Green								
BCSM25-C800	800	Brown*								
BCSM25-C900	900	Grey*								
BCSM25-C1000	1000	Orange*								
BCSM25-C1100	1100	Green*								
BCSM25-C1200	1200	Orange**								
BCSM25-C1300	1300	Green**								
BCSM2-2C1400	1400	Green	310	90	160	180	250	280	M16X100	M12
BCSM25-2C1600	1600	Brown*								
BCSM25-2C1800	1800	Grey*								
BCSM25-2C2000	2000	Orange*								
BCSM25-2C2200	2200	Green*								
BCSM25-2C2400	2400	Orange**								
BCSM25-2C2600	2600	Green**								
BCSM25-4C2800	2800	Green	325	170	160	180	310	295	24	M36
BCSM25-4C3200	3200	Brown*								
BCSM25-4C3600	3600	Grey*								
BCSM25-4C4000	4000	Orange*								
BCSM25-4C4400	4400	Green*								
BCSM25-4C4800	4800	Orange**								
BCSM25-4C5200	5200	Green**								

* With WHITE Core Spring ** With BLUE Core Spring *** With RED Core Spring

Cased Spring Mount – 50 mm Standard Deflection SPECIFICATION

Isolator Model	Rated Load (kg)	Spring Colours	Dimensions (mm)							
			L	W	H	HIR	A	BC	D	d
BCSM50-A010	10	Brown	165	90	140	158	150	186	M10X75	M8
BCSM50-A015	15	Orange								
BCSM50-A030	30	Green								
BCSM50-A040	40	Red								
BCSM50-A060	60	White								
BCSM50-A100	100	Blue								
BCSM50-A150	150	Black								
BCSM50-A200	200	Yellow								
BCSM50-A250	250	Purple								
BCSM50-A300	300	Grey	240	100	178	220	170	205	M16X100	M14
BCSM50-C200	200	Red								
BCSM50-C250	250	Orange								
BCSM50-C300	300	Brown								
BCSM50-C400	400	Green								
BCSM50-C500	500	Yellow								
BCSM50-C600	600	Yellow*								
BCSM50-C700	700	Yellow**								
BCSM50-C800	800	Yellow***								
BCSM50-2C1000	1000	Yellow	350	100	185	220	250	290	M18X100	M12
BCSM50-2C1200	1200	Yellow*								
BCSM50-2C1400	1400	Yellow**								
BCSM50-2C1600	1600	Yellow***								
BCSM50-4C2000	2000	Yellow	350	170	185	220	310	295	20	M24
BCSM50-4C2400	2400	Yellow*								
BCSM50-4C2800	2800	Yellow**								
BCSM50-4C3200	3200	Yellow***								



* With WHITE Core Spring
** With BLUE Core Spring
*** With BLACK Core Spring

Note:

- Due to policy of continuous improvement, the specifications are subject to change without prior notice.
- Measurements are subject to 5% tolerance.
- To achieve good sound suppression, do not overload fitting.